



## **Software Built To Digitise and Automate the Workplace**

SigniFlow is an advanced electronic workflow approval software that centers around documents, designed to seamlessly integrate with any business ecosystem and enhance critical last-mile workflow efficiency.

**TOTAL CONFIDENCE**

---

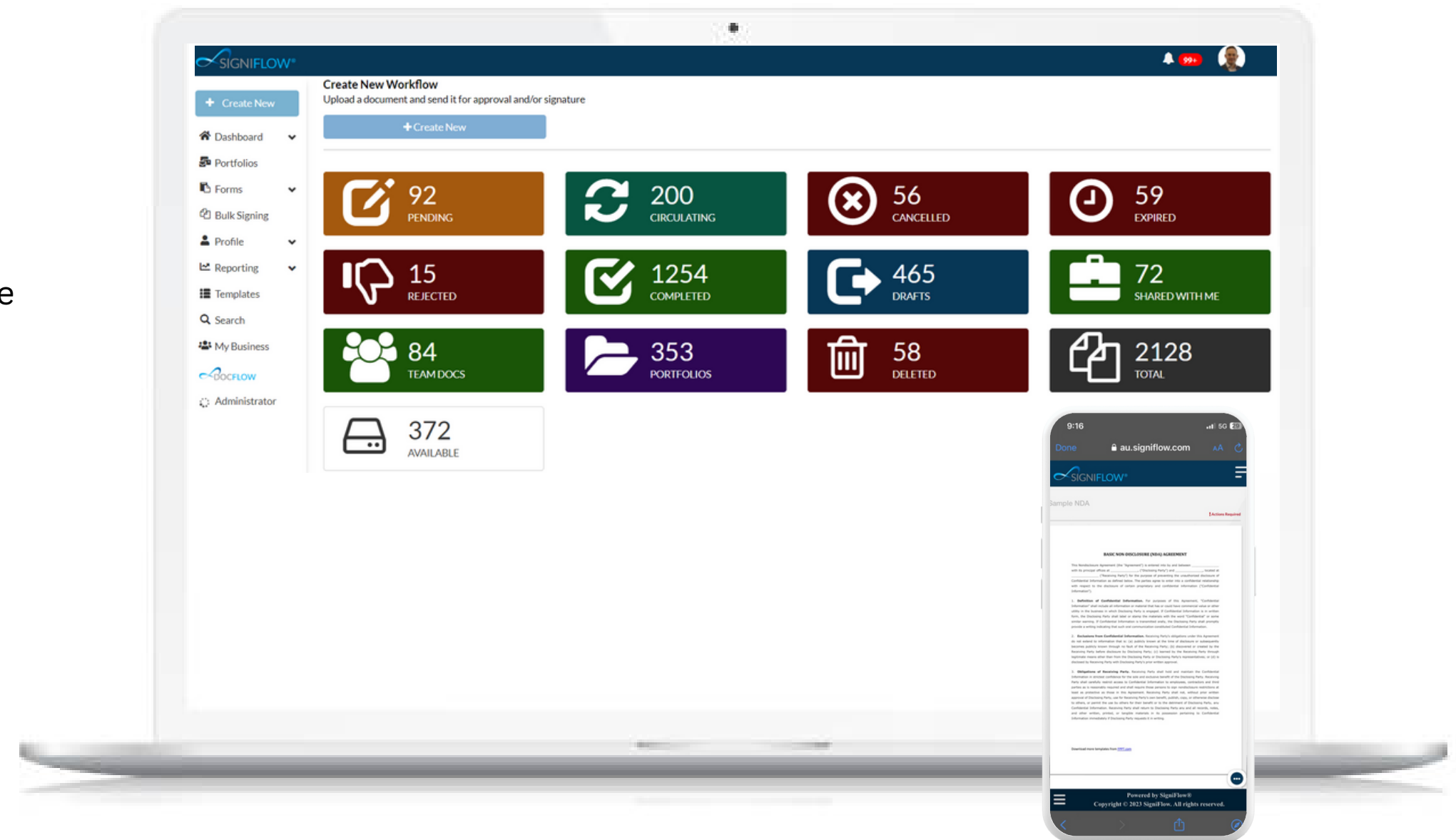
# Introducing SigniFlow

SigniFlow is an advanced electronic signature and workflow management software that enables you to sign, send, and manage documents securely and electronically.

With SigniFlow, you can create legally binding documents, automate workflows, and ensure compliance with advanced security features like encryption and audit trails.

Our platform is ideal for businesses and organisations across various industries, such as banking, insurance, legal, HR, and government, to streamline document management processes and increase operational efficiency.

Say goodbye to paper-based signatures and hello to a secure, affordable, easy-to-use e-signature solution with SigniFlow.



# Empowering your digital transformation with SigniFlow's digital solutions

SigniFlow is a comprehensive digital solutions provider that offers a range of tools and services to streamline business processes and enable secure and efficient document management.

Its suite of digital solutions includes advanced electronic signatures, workflow automation, document automation and generation, digital identity verification, and facial recognition technology.

The integration of SigniFlow with Microsoft 365 enables users to create, store, and manage their documents in a single location, while also providing advanced features such as workflow automation and audit trails.

Users can also access and sign documents from within Microsoft 365 applications, such as Word and Outlook.

The SigniFlow Power Automate Connector enables users to create powerful workflow automation solutions, leveraging the capabilities of both SigniFlow and Microsoft Power Automate.



## **eSignature Workflow**

The compliant eSign solution that is loved by all departments.



## **Microsoft 365**

A free add-in that enables users to directly send documents for signing in SigniFlow from Outlook, Word, Excel or Powerpoint.



## **Document Automation**

An integrated, no-code platform to automate document routing and retention using meta-data.



## **Document Generation**

An integrated template-driven document generation and automation engine.



## **Face Sign**

A new, better way of eSigning documents using anti-spoofing, 3D facial biometric technology.



## **Digital Identity**

Integrated international and eGOV Digital Identity providers for enhanced authentication and compliance with in-country legislation.

## Trusted by Leading Brands

SigniFlow is a trusted provider of digital solutions that has gained recognition and trust from leading brands across various industries.

Many leading brands have chosen SigniFlow for its ability to improve business processes, enhance customer experiences, and meet compliance requirements. These brands include major financial institutions, automobile manufacturers, telecommunications, healthcare providers, and government agencies and more.

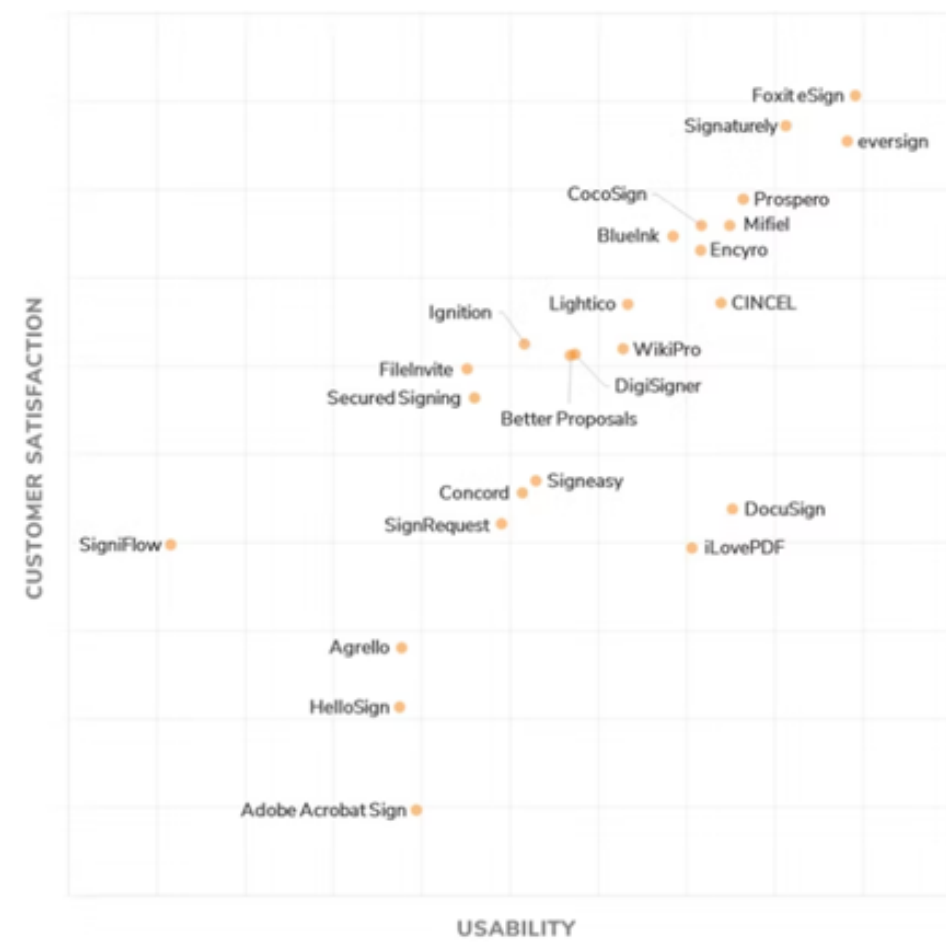
One reason for SigniFlow's success is its commitment to security and compliance. SigniFlow is built on secure, trusted technology, and its digital solutions comply with various international regulations.



## A Thought Leader Among Analysts

Gartner recognised SigniFlow as Front Runner for its unique approach to its alternative licensing schemes which include hosted and self-hosted deployments.

SigniFlow continues to disrupt the market with pioneering thought leadership around alternate licensing models designed for all industry sectors.



**FRONT RUNNERS**  
Your Guide to Top Electronic Signature Software, April 2022

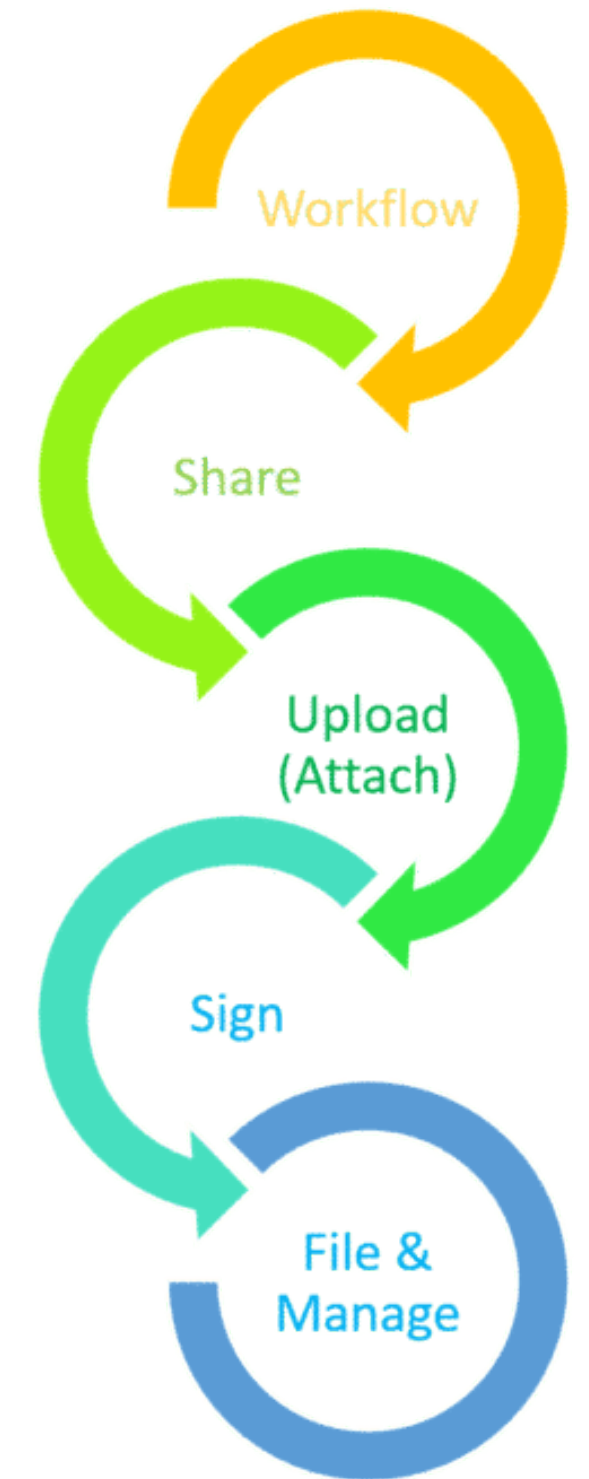
# Gartner®

## Gartner July 2022 Market Guide for Electronic Signatures

## Experience the power of secure, compliant, and customisable document workflows with SigniFlow.

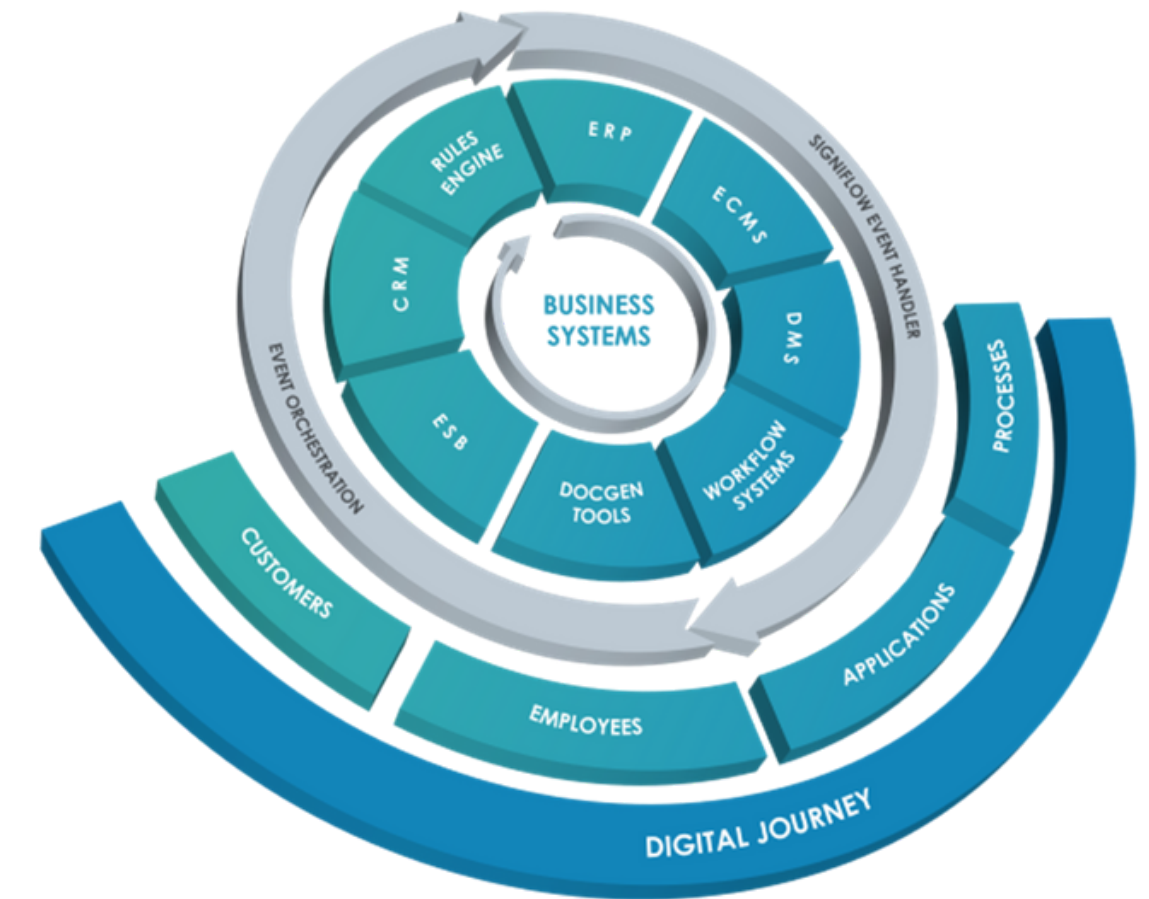
SigniFlow is a comprehensive electronic signature and workflow management software that offers a range of features and benefits, making it a popular choice for businesses and organisations of all sizes. Here are some reasons why you might choose SigniFlow:

- 1. Compliance:** SigniFlow is designed to comply with various local and international e-signature laws and regulations, such as Australia's Electronic Transactions Act, eIDAS, the EU's Electronic Identification, Authentication, and Trust Services regulation. This means that signatures generated by SigniFlow are legally binding and can be used for a wide range of business and legal purposes.
- 2. Security:** SigniFlow provides robust security features, such as advanced encryption, authentication, and audit trails, to ensure that documents are protected from tampering and unauthorised access. SigniFlow also offers multi-factor authentication options and uses cryptography to provide an additional layer of security.
- 3. Customisation:** SigniFlow allows users to customise their workflows and document templates to fit their unique business requirements. You can create a signature and document management system that meets your specific needs and workflows.
- 4. Integration:** SigniFlow can integrate with a wide range of third-party applications, such as Salesforce, SharePoint, and Microsoft 365, to streamline document workflows. This means that you can use SigniFlow alongside your existing business software and tools, making it easier to manage your documents and workflows.
- 5. User-friendly:** SigniFlow is designed to be user-friendly, with an intuitive interface and easy-to-use features. This means that you and your team can quickly learn how to use SigniFlow, reducing the need for extensive training or IT support.
- 6. Cost-effective:** SigniFlow is competitively priced and offers a range of pricing plans to fit different budgets. This means that you can choose a plan that fits your business's needs and budget, without overspending on unnecessary features or services.



## Here Are Some Ways That SigniFlow Can Compliment Your Digital Ecosystems

- 1. Enhanced security:** SigniFlow uses advanced encryption technology to ensure that all documents are secure and tamper-proof. By integrating SigniFlow into a digital ecosystem, organisations can enhance the security of their digital transactions.
- 2. Streamlined processes:** With SigniFlow, organisations can streamline their document signing processes, reducing the time and effort required to manage and process paperwork. This can lead to faster turnaround times and increased productivity.
- 3. Improved customer experience:** SigniFlow enables organisations to provide a seamless and convenient experience for their customers. Customers can sign documents from anywhere, at any time, using any device. This can help to improve customer satisfaction and loyalty.
- 4. Integration with other systems:** SigniFlow can be integrated with other systems and platforms, such as CRM or document management systems. This enables organisations to create an end-to-end digital process, from document creation to signature and storage.
- 5. Cost savings:** By reducing paper-based processes and streamlining workflows, SigniFlow can help organisations save money on printing, paper, and storage costs. It can also help to reduce the time and resources required to manage and process paperwork.



## Streamline Your Processes, Elevate Your Productivity With SigniFlow's Integrations.

SigniFlow offers extensive integration capabilities that can assist companies in streamlining their document management and approval processes.

Integrating SigniFlow with existing systems also allows businesses to automate their document approval processes, reducing manual intervention and improving the efficiency and accuracy of their workflows.

With document automation, templates can be created with pre-defined fields that can be filled in automatically with data from other systems, further streamlining the process.

Overall, SigniFlow's integration capabilities can assist companies in improving collaboration and productivity, reducing errors, and meeting compliance requirements.





# Revolutionize Your Workflow with Powerful Software Functionality

SigniFlow's workflow functionality enables businesses to design, automate, and manage complex document workflows with ease. It allows for the customisation of workflows to meet specific business needs, making the process of document approval and signing more efficient and accurate.

The workflow functionality of SigniFlow includes:

- 1. Workflow Design:** SigniFlow allows users to design workflows that meet their specific business requirements, including the creation of parallel, serial, or mixed approval processes
- 2. Workflow Templates:** SigniFlow automates document workflows, reducing manual intervention and ensuring that documents are routed to the right people at the right time.
- 3. Workflow Management:** SigniFlow provides a centralised dashboard that enables businesses to track the progress of documents and monitor the status of workflows, allowing for better management and control of document workflows.

Overall, SigniFlow's workflow functionality helps businesses to save time and increase productivity by automating and streamlining document workflows, making the process of document signing more efficient and accurate.

STEP ONE

UPLOAD DOCUMENTS

STEP TWO

SET UP WORKFLOW

STEP THREE

ADD SIGNERS

STEP FOUR

PLACE TEXT AND SIGNATURE FIELDS

STEP FIVE

RELEASE WORKFLOW

## Streamline Your signatures, Fortify Your Security With SigniFlow

SigniFlow is a electronic signature and workflow management solution that offers high levels of security to protect sensitive information and ensure the integrity of documents. Here are some of the key security features and measures that SigniFlow employs:

- 1. Advanced Encryption:** SigniFlow uses advanced encryption technologies, including 256-bit SSL and AES encryption, to secure documents and data.
- 2. Two-Factor Authentication:** SigniFlow offers two-factor authentication to ensure that only authorised individuals have access to the system and the documents being signed.
- 3. Role-Based Access Control:** SigniFlow allows administrators to assign roles and access levels to users, ensuring that sensitive information is only accessible to authorised individuals.
- 4. Audit Trail:** SigniFlow keeps a detailed audit trail of all activities performed within the system, providing a transparent record of who has accessed documents and when.
- 5. Cloud Security:** SigniFlow's cloud infrastructure is hosted on secure servers, ensuring that data is protected from external threats.
- 6. Compliance:** SigniFlow is compliant with a range of security and privacy regulations, including GDPR, PDPA, and HIPAA, ensuring that it meets the highest standards of data protection and privacy.

Overall, SigniFlow employs a range of advanced security features and measures to ensure that documents and data are protected at all times, providing organisations with a secure and reliable electronic signature and workflow management solution.



# SigniFlow - The flexibility to deploy your way, with security and ease

SigniFlow is a digital signature and workflow management platform that provides various deployment options to cater to different business requirements. The three main deployment options offered by SigniFlow are Hosted, On Premise, and Self-hosted.

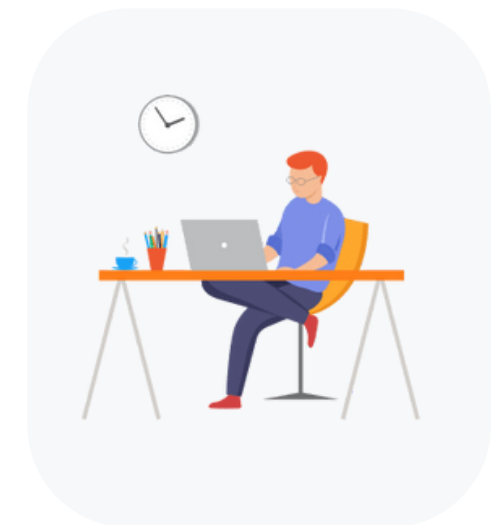
- 1. SigniFlow Hosted Deployment:** SigniFlow Hosted deployment is a cloud-based solution where the application and data are hosted and managed by SigniFlow. The customer does not need to install or maintain any hardware or software. This deployment option offers a simple and easy-to-use solution for small and medium-sized businesses. It offers secure, reliable, and scalable services at an affordable price.
- 2. On-Premise Deployment:** SigniFlow On-Premise deployment is installed on the customer's hardware and is managed by their IT department. This deployment option offers complete control over the platform, including data security, compliance, and customisation. On-Premise deployment is suitable for businesses with strict security policies or compliance requirements that require complete control over their data.
- 3. Self-hosted Deployment:** SigniFlow Self-hosted deployment is installed on a dedicated server, which is hosted and managed by the customer. This deployment option offers complete control over the application, data, and infrastructure. Self-hosted deployment is suitable for businesses that want to have complete control over the platform and data but do not have the resources or expertise to manage the infrastructure.



## SigniFlow's licenses - Streamlined pricing, tailored to your business

In addition to its various types of deployments , SigniFlow also offers three different pricing models for its licenses: user-based and per-document-based licensing.

1. **User-based Licensing:** Under user-based licensing, SigniFlow charges customers based on the number of users who will be accessing and using the platform. This licensing model is suitable for businesses with a fixed number of users who will be using the platform regularly
2. **Per-document Licensing:** Under per-document-based licensing, SigniFlow charges customers based on the number of documents or signatures processed by the platform. This licensing model is suitable for businesses that have a variable number of users or that only require the platform on an ad-hoc basis.
3. **Unlimited Licensing (Enterprise):** The unlimited license is designed for large organisations with high volumes of document processing and signature requirements. This licensing option allows businesses to use the SigniFlow platform without worrying about any usage restrictions or additional costs.



# Why settle for less? Choose SigniFlow for the best advanced electronic signature experience.

SigniFlow is one of the best electronic signature solutions for businesses of all sizes for several reasons:

- 1. Comprehensive features and functionality:** SigniFlow provides a comprehensive set of features and functionality that cater to businesses of all sizes. From basic document signing to complex workflows and advanced security features, SigniFlow has everything businesses need to manage their electronic signatures and workflows.
- 2. Flexible deployment options:** SigniFlow offers flexible deployment options to suit businesses of all sizes and requirements. Whether businesses prefer a cloud-based, on-premises or self-hosted deployment, SigniFlow has a solution that will work for them.
- 3. Customisable workflows:** SigniFlow allows businesses to customise their workflows and tailor them to their specific requirements. This means that businesses can create workflows that fit their unique needs, whether it is a simple two-party signing process or a complex multi-party workflow.
- 4. Compliance and security:** SigniFlow is designed with compliance and security in mind. It complies with international e-signature regulations and provides advanced security features such as two-factor authentication, digital certificate validation, and more.
- 5. Scalability:** SigniFlow is highly scalable and can accommodate businesses of all sizes, from small businesses to large enterprises. The platform can handle high volumes of document processing and signature requirements, making it an ideal solution for businesses that need to scale quickly.



**2023 SigniFlow Pty Ltd. All rights reserved.**

**This document, and any associated materials, are the exclusive property of SigniFlow Pty Ltd and are protected by copyright laws. Any reproduction, modification, distribution, transmission, display, or performance of this document, in whole or in part, without the prior written consent of SigniFlow Pty Ltd is strictly prohibited.**

**The information contained in this document is provided "as is" without warranty of any kind, either express or implied, including but not limited to the implied warranties of merchantability, fitness for a particular purpose, or non-infringement. SigniFlow Pty Ltd assumes no responsibility for errors or omissions in this document or other documents that may be referenced within this document.**

**All trademarks, service marks, trade names, and logos appearing in this document are the property of their respective owners.**

**By using this document, you agree to be bound by the terms and conditions of SigniFlow Pty Ltd's End User License Agreement. If you do not agree to these terms and conditions, do not use this document or associated materials.**

---